

5 Year Land Supply for Housing in England as at April 2009

This release of Official Statistics is the first in an annual series summarising Local Planning Authorities' reported assessment of the '5 year land supply' for housing. This release reports on the land supply for the 5 years from April 2009. The statistics include:

- The number of and proportion of authorities which reported having identified at least a sufficient supply of sites for the housing requirements for 5 years from April 2009,
- Each local planning authority's reported proportion of the '5 year housing requirements' that can be accommodated on available, suitable and achievable sites.

As at April 2009:

- 86 per cent of all Local Planning Authorities reported to have identified sufficient sites to supply 100 per cent or more of the housing requirement for the next 5 years.
- The North East, North West, West Midlands and London had the highest proportions of Local Planning Authorities (91 per cent each) reporting at least a sufficient supply of land for housing requirements over the next 5 years.
- The East Midlands and the South West had the lowest proportion of Local Planning Authorities (78 per cent each) reporting at least a sufficient supply of land for housing requirement over the next 5 years.

Headlines	1
Key Statistics	2
Department Strategic Objective	4
Data Collection	5
Data Quality	5
Background notes	5
Further information	6
Enquiries	6
Accompanying Tables	6

Introduction

This Statistical Release presents Official Statistics on Local Planning Authorities' reported assessments of their '5 year land supply' for housing in England, by region and by Local Planning Authority, as at April 2009.

Local Planning Authorities in England are required to identify sufficient specific deliverable sites to deliver the housing required in the next five years. (Planning Policy Statement 3 Housing 2006)

Key Statistics

For the five years from April 2009, 313 of the 363 (86 per cent) Local Planning Authorities reported to have identified a sufficient supply of land to accommodate their 'five year housing' requirement.

The chart in Figure 1 shows, by Government Office Region, the numbers of Local Planning Authorities which reported a sufficient 'five year supply' of land, and also those that reported less than required land.

Figure 1: Number of local planning authorities reporting the required '5 year land supply' for housing, by Government Office Region

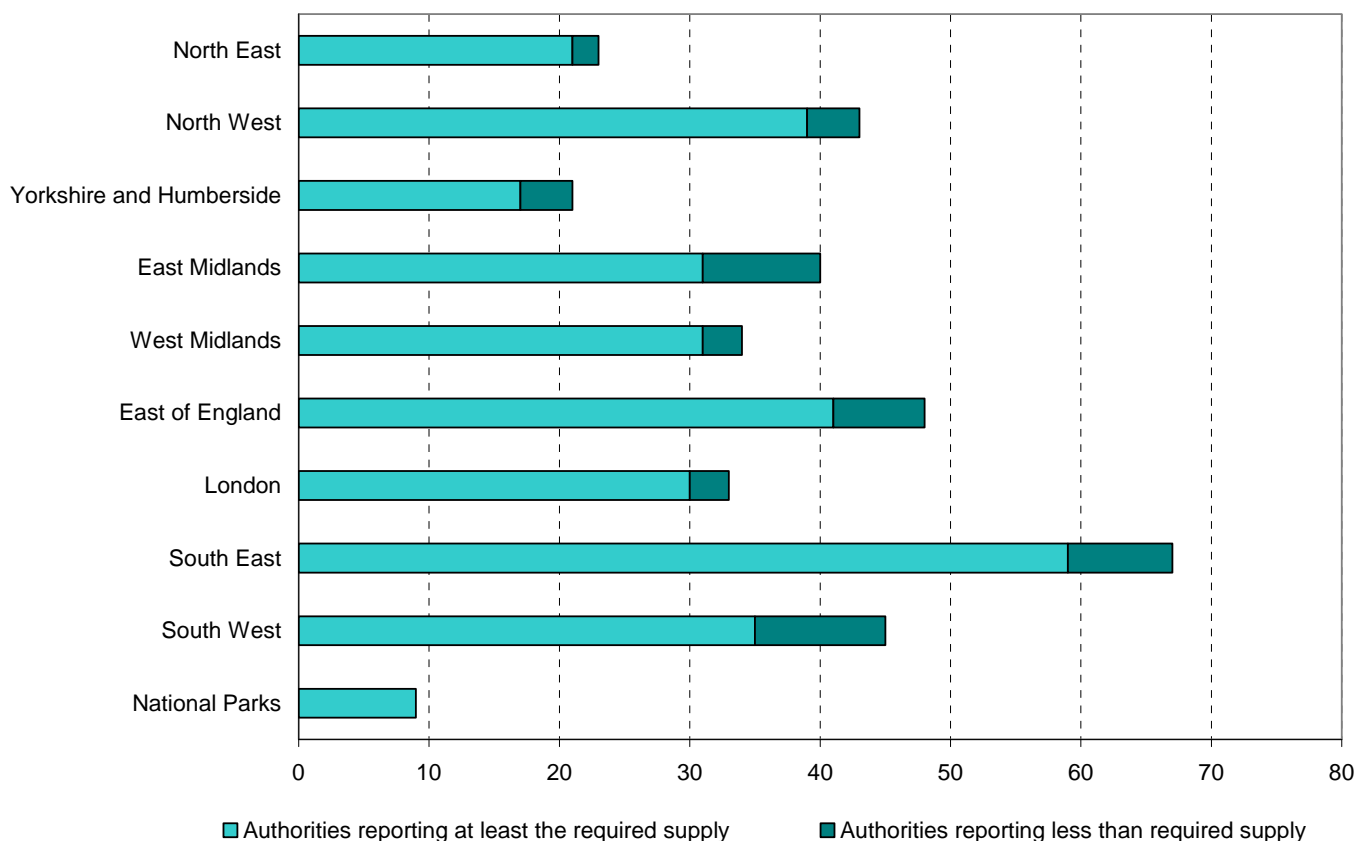
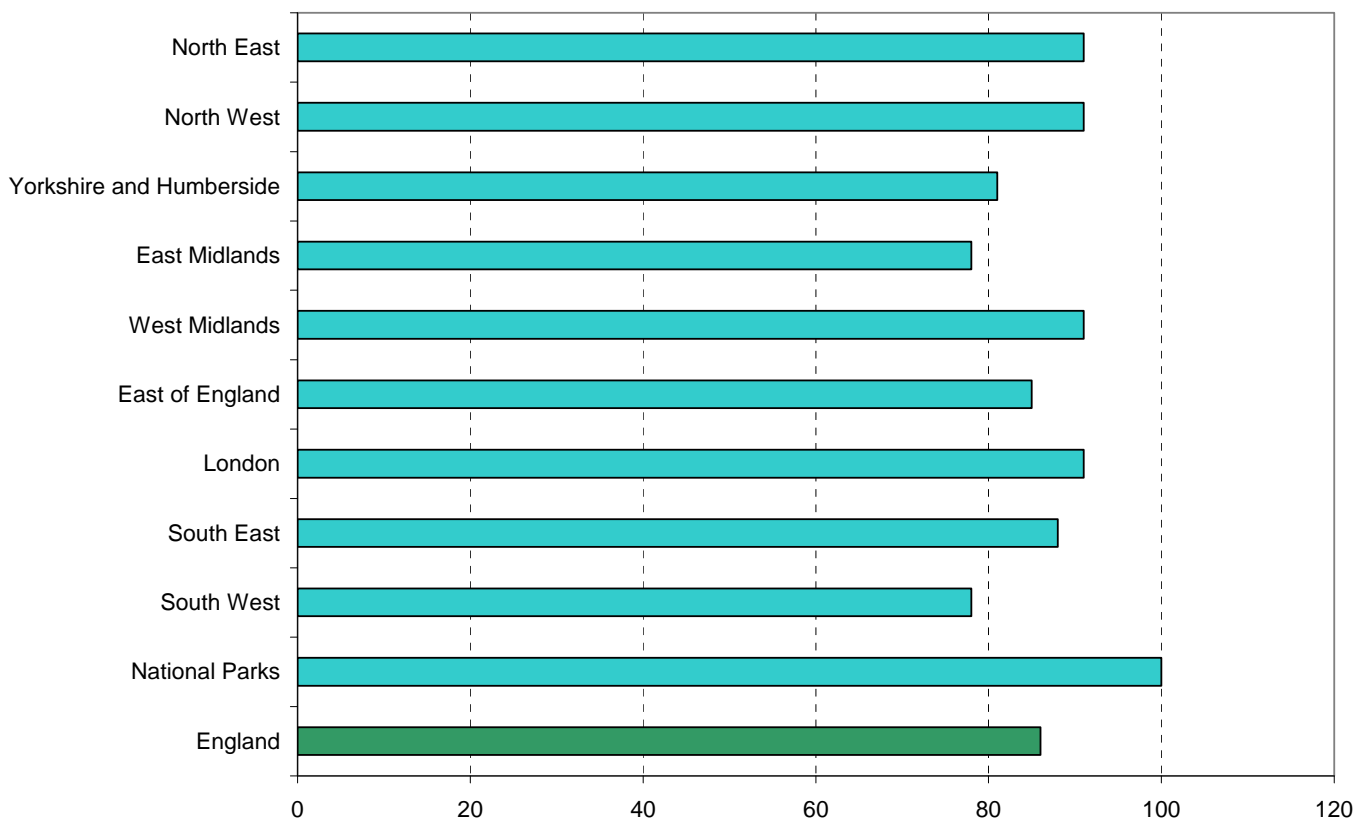


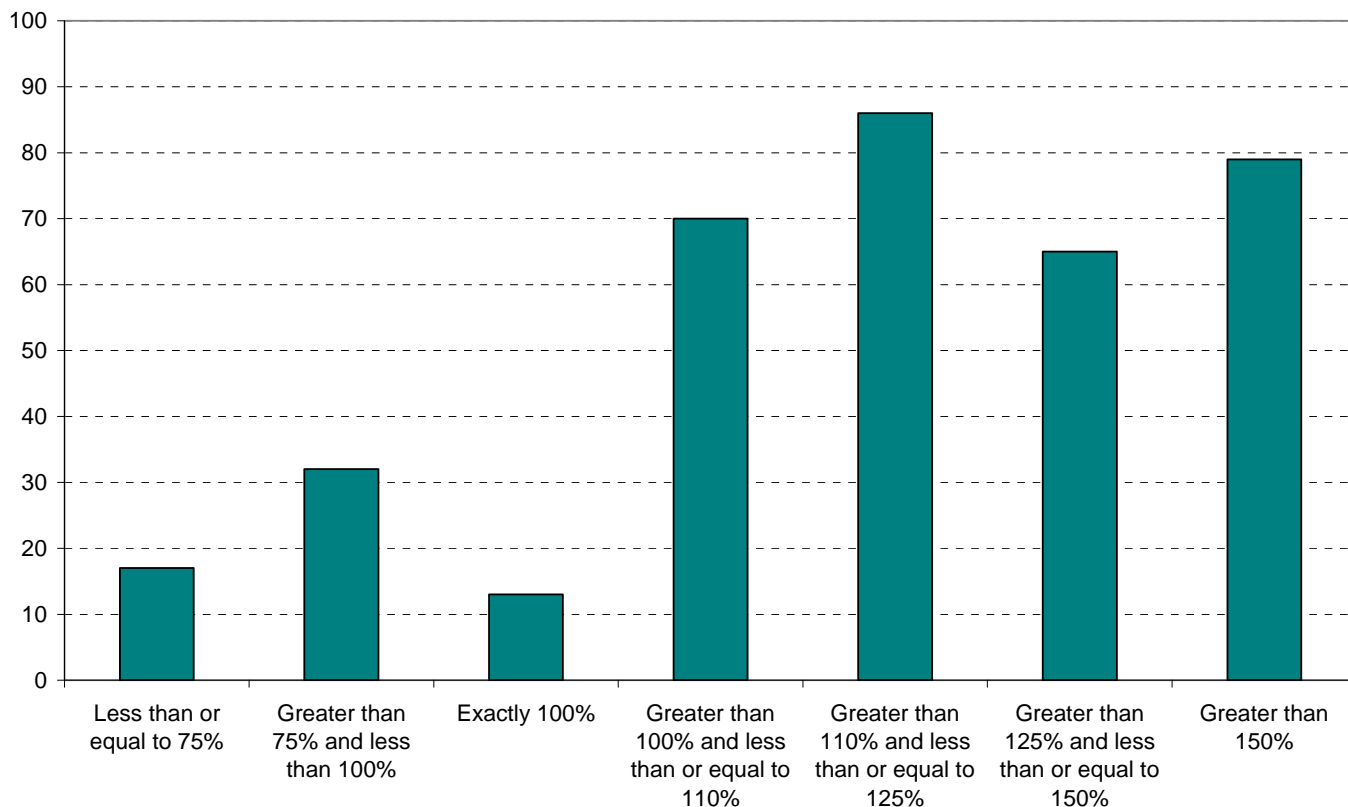
Figure 2 shows the proportions of authorities in each region that reported a sufficient '5 year land supply' In England, as a whole, 86 per cent of all authorities reported a sufficient '5 year land supply' for housing. The North East, North West, West Midlands and London had the highest proportions of Local Planning Authorities (91 per cent each) with at least a sufficient supply of land for housing requirements over the next 5 years. The East Midlands and the South West had the lowest proportion of Local Planning Authorities (78 per cent each) with at least a sufficient supply of land for housing. National Parks all identified sufficient sites to meet their housing requirements.

Figure 2: Percentage of local planning authorities reporting the required 5 year land supply for housing, by Government Office Region



Local planning authorities reported the proportion identified as deliverable sites of the required '5 year land supply'. Figure 3 show that local authorities ranged from those identifying sites that would meet less than 75 per cent of their housing requirements to those reporting over 150 per cent.

Figure 3: Number of authorities by proportion of housing requirement for the next 5 years which can be met by sufficient land supply, England



Department Strategic Objective

Communities and Local Government's Strategic Objective on Planning (DSO5) is to provide a more efficient, effective and transparent planning system that supports and facilitates sustainable development, including the Government's objectives in relation to housing growth, infrastructure delivery, economic development and climate change. The 'Supply of ready to develop housing sites' - the '5 year land supply' is one of the indicators used to measure progress on this objective. Success for the indicator is defined as '90 per cent of local authorities to have identified a five year supply of deliverable sites for housing by 2010.

The 'five year supply of deliverable sites for housing' is also one of Local Authority National Indicators (NI 159).

Planning Policy Statement 3 Housing (2006) requires Local Planning Authorities to identify sufficient specific deliverable sites to deliver the required housing over the next five years.

Data collection

Local Planning Authorities provided Communities and Local Government, in May 2009, with information on their 'five year land supply for housing'. Local Planning Authorities reported in percentages how much of the housing requirements for the five years from April 2009 could be accommodated on identified sites. These statistics are therefore based on the information as reported in May 2009.

Data quality

Reported data was assessed and implausible or unexpected values were checked with individual local planning authorities.

Background notes

1. This Release is a web-only publication.
2. Details of officials who receive pre-release access to this statistical release 24 hours before publication can be found at: [LINK](#)

Further information

Date of next publication

Local Planning Authority '5 Year Land Supply at April 2010' is planned for publication in the Autumn 2010.

Enquiries

1. This Statistical Release can be accessed from the Communities and Local Government website at: [LINK](#)

2. Information on '5 Year Land Supply' statistics can be obtained from:

Bob Garland

Housing Markets and Planning Analysis Division

Communities and Local Government

2/A5, Eland House, Bressenden Place, London SW1E 5DU.

Telephone: 030344 42273

Email: bob.garland@communities.gsi.gov.uk

Media enquiries:

Office hours: 020 7944 3049

Out of hours: 020 7944 5495

Email: press@communities.gov.uk

Public enquiries:

Telephone: 020 7944 4400

Information on Official Statistics is available via the UK Statistics Authority website:

www.statistics.gov.uk

Information about Communities and Local Government is available via the Department's website:

www.communities.gov.uk

Accompanying Tables (Available for download)

Table 1 Local Planning Authorities Reporting '5 year land supply' for housing at April 2009, by region

Table 2 Proportion of '5 year land supply' identified, by local planning authority, at April 2009.

Department for Communities and Local Government. © Crown Copyright, 2009

If you require this publication in an alternative format please email: alternativeformats@communities.gsi.gov.uk. Please note that the nature of content means that we may not be able to provide the Statistical series of publications in all requested formats.

November 2009

ISBN: 978-1-4098-2048-2